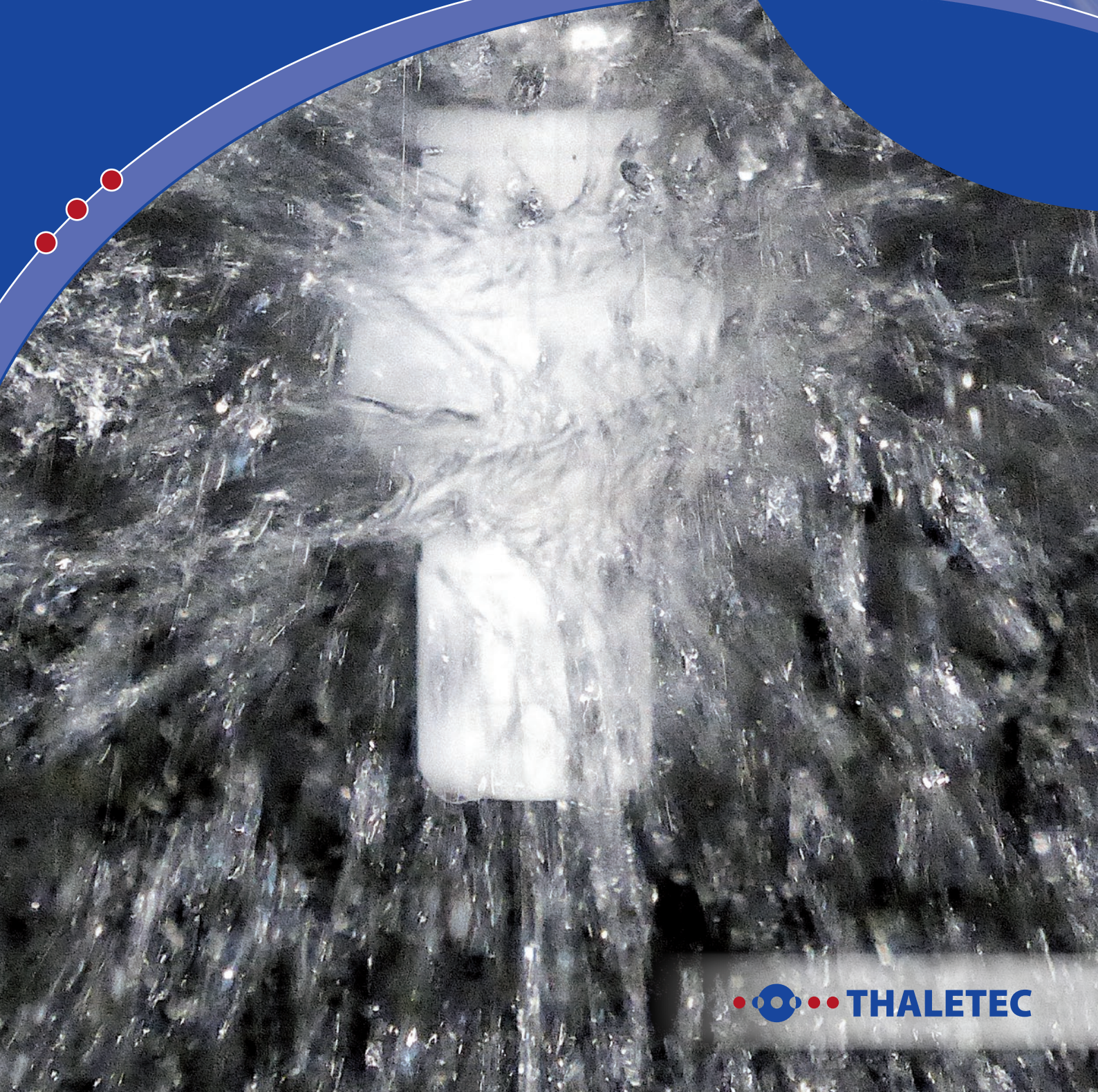
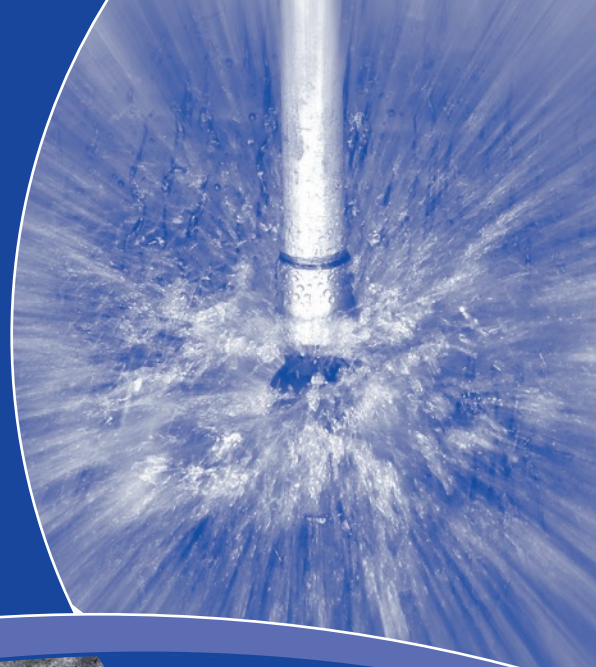


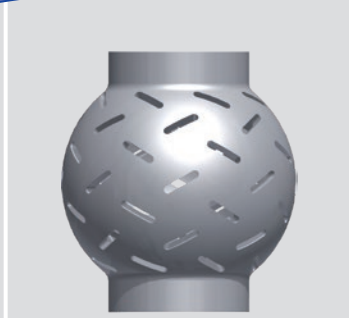
THALETEC CIPPY

**CIP device for glass-lined
equipment**

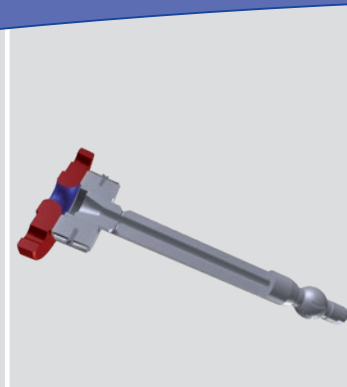




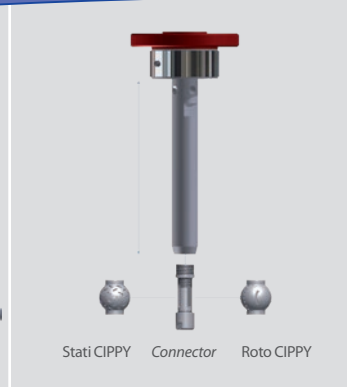
1: RotoCIPPY spray head



2: StatiCIPPY spray head



3: Cross sectional view of the CIPPY-system with CIP-nozzles in the feed pipe



4: Modular System THALETEC CIPPY

Description:

With the **CIPPY** modular system, THALETEC offers a modular spray cleaning system for glass-lined equipment up to 2000 mm in diameter. The system consists of:

- DN 50 (2") or DN 80 (3") flange connection
- DN 25 CIP nozzle
- CIPPY unit, consisting of a connecting component and alternatively a static (**StatiCIPPY**) or auto-rotating (**RotoCIPPY**) spray head
- feed pipe up to 600 mm long, with additional nozzles for cleaning the tank nozzle, of glass fibre reinforced PTFE with FDA approval

All PTFE components have FDA approval and are also available in FDA approved, electrically conductive PTFE. By replacing the CIPPY unit, different cleaning concepts can be implemented. If required, we also develop special spray heads.

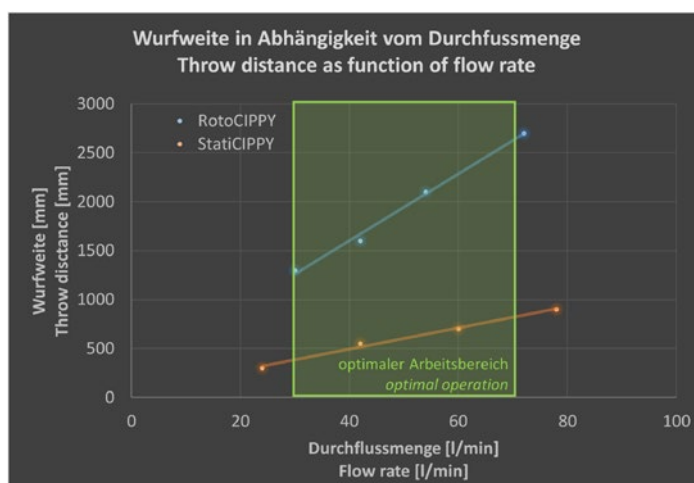
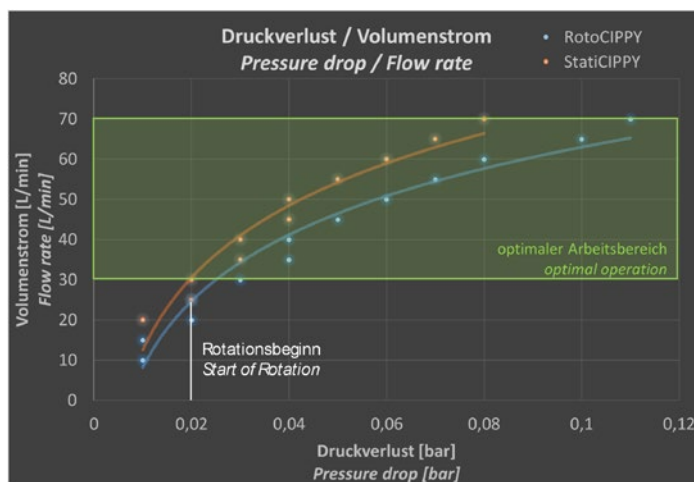
Features:

- Modular CIP system
- Both static and rotating CIP system can be implemented with the same structure
- Adaptable at any time to special cleaning tasks
- Pressure: -1/+6 bar in glass-lined tank, -1/+6 bar for the cleaning medium
- Temperature: -60°/+230°C in glass-lined tank, -25°/+160°C for the cleaning medium
- Flow rate: 0.3 l/s to 1.2 l/s at recommended pressure of the cleaning medium to max. 6 bar
- **RotoCIPPY**: Rotating spray head with up to 1400 rpm (360° spray pattern)
- **StatiCIPPY**: Static spray head with innovative nozzle pattern for full coverage of illuminated surfaces (360° spray pattern)

Advantages:

- Cost-effective, since implemented in a modular system
- Flexible use through exchange or adjustment of only one component

- Operating data fully cover the usual interpretation range of glass-lined equipment
- Good to excellent cleaning performance
- Safe cleaning also of the tank nozzles in which the CIPPY is installed by additional flush drillings in the feed pipe (optional)



THALETEC GmbH

Steinbachstraße 3
D - 06502 Thale

+49 (0) 3947 778-0
+49 (0) 3947 778-130

Hotline:

+49 (0) 3947 778-111
service@thaletec.com
www.thaletec.com

